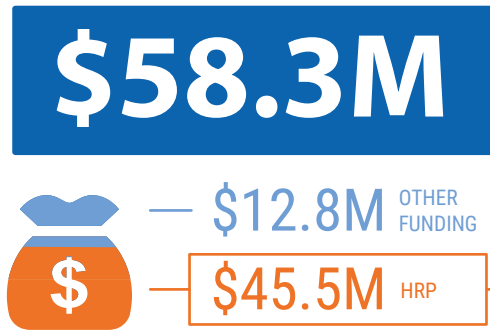
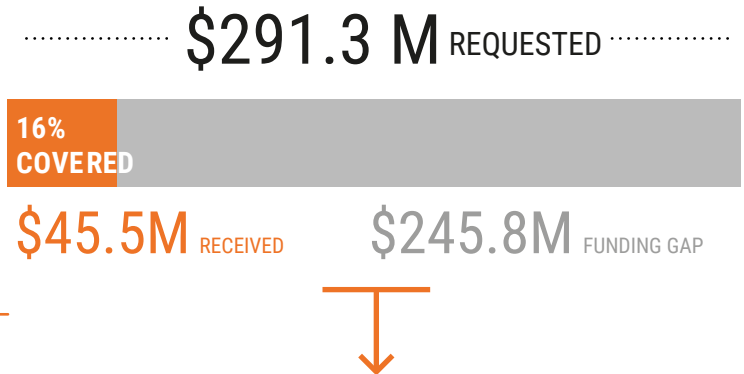


TOTAL HUMANITARIAN FUNDING

M = Million

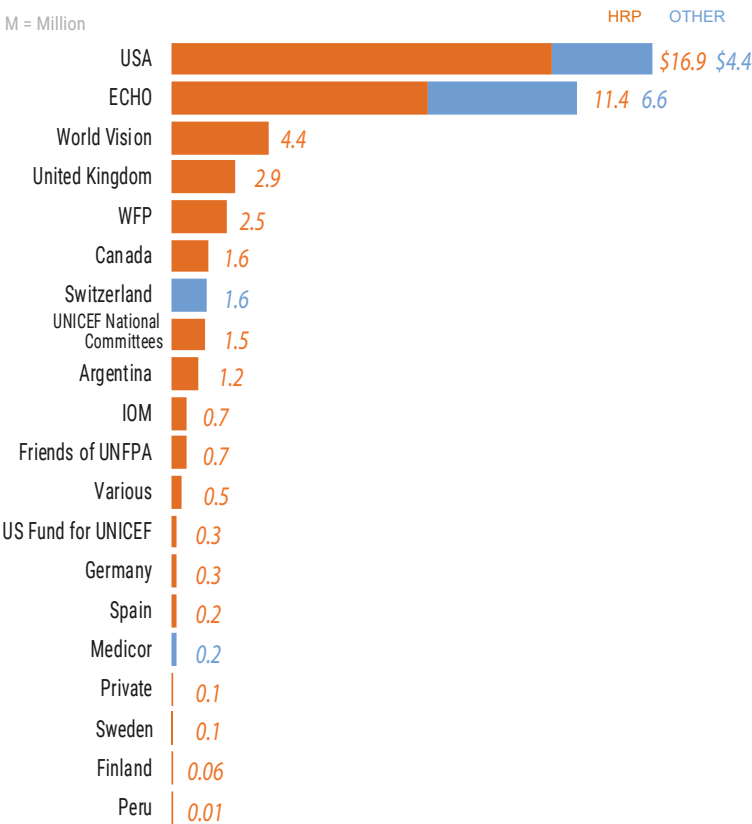


HUMANITARIAN RESPONSE PLAN 2017

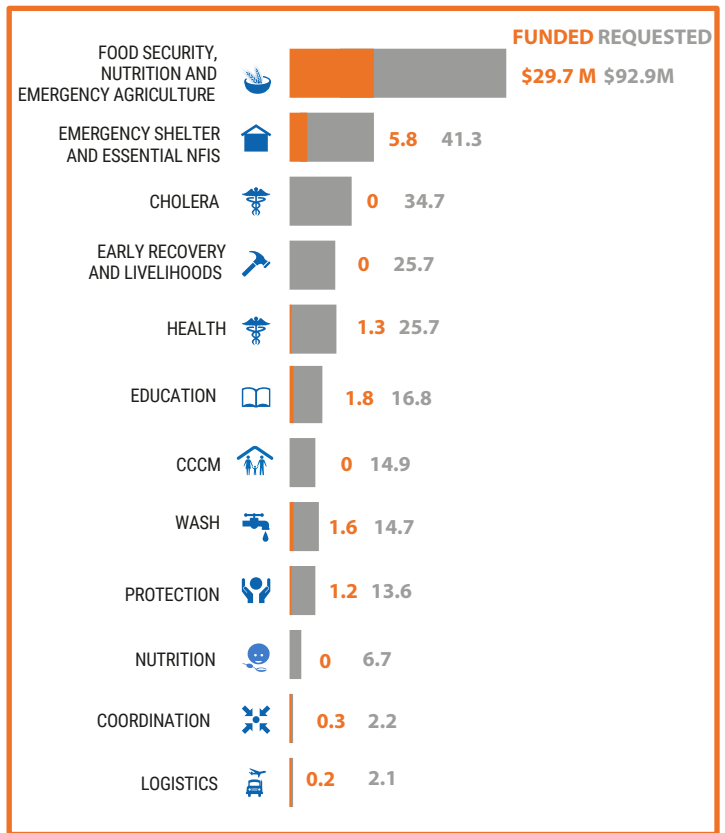


TOTAL CONTRIBUTIONS BY DONOR

M = Million

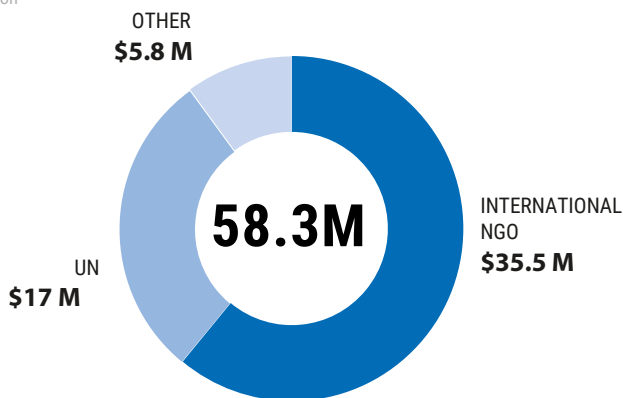


FUNDING PER SECTOR



TOTAL CONTRIBUTIONS BY RECIPIENT

M = Million



RECIPIENT ORGANIZATION

