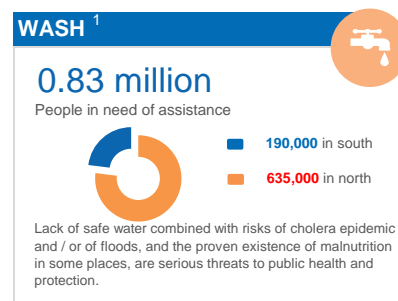
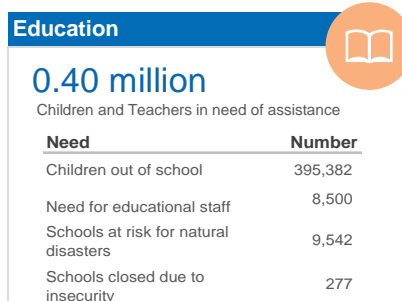
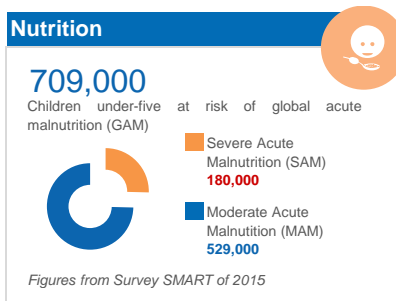
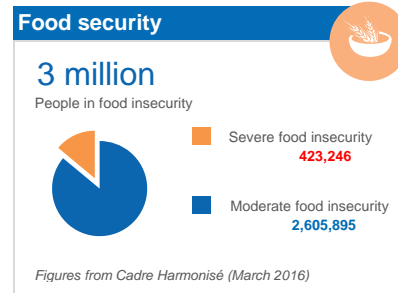
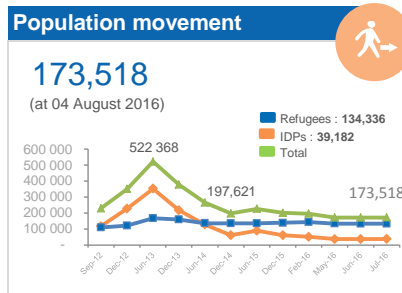
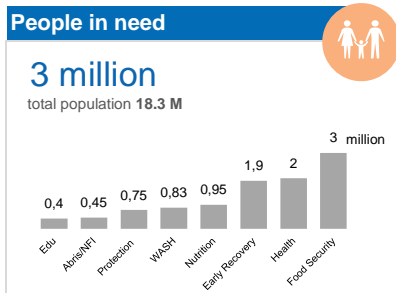


SITUATION OVERVIEW

In this lean season, 3 million people are food insecure, including 423,000 who need immediate assistance. In addition, 709,000 children are at risk of acute malnutrition this year. In the north and center of the country, the persisting insecurity continues to limit access to basic social services, undermine the provision of aid and exacerbate the vulnerabilities of populations in affected-areas. Renewed clashes between armed groups in the Kidal region in July, in violation of the cease-fire, are particularly of concern. This violence is a threat to the safety of civilians and generated new displacements. Today there are about 39,200 internally displaced persons in Mali and 134,300 Malian refugees in neighboring countries.

KEY FIGURES



FUNDING: HUMANITARIAN RESPONSE PLAN 2016 (as of 9 August 2016)

\$ 354
REQUESTED (US\$)

28%
FUNDED

\$ 98.5
RECEIVED (US\$)

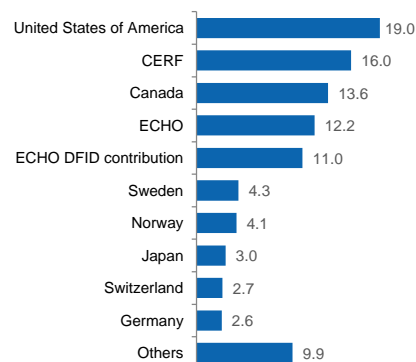
Requirements by cluster (million \$)

Percent funded by cluster

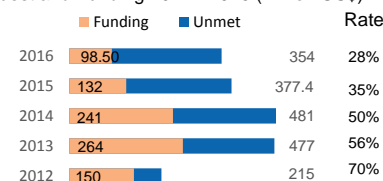
Cluster	Requirements (million \$)	Percent funded	Funded (million \$)	Unmet (million \$)
Food security	116.2	10%	11.1	105.1
Protection	59.0	6%	3.4	55.6
Nutrition	45.9	21%	9.6	36.3
Early recovery	37.7	14%	5.4	32.3
Education	33.4	23%	7.6	25.9
WASH	26.1	25%	6.5	19.6
Coordination	14.5	34%	4.9	9.6
Shelter & NFI	11.1	23%	2.6	8.5
Health	10.1	34%	3.4	6.7
Cluster not specified	44.0			

Contributions (million \$)

CERF: \$ 16.0 millions 16% of contributions



Request and Funding 2012 - 2016 (million US\$)



STRATEGIC OBJECTIVES

- 1 Track and analyse risk and vulnerability, integrating findings into humanitarian and development programming.
- 2 Support vulnerable populations to better cope with shocks by responding earlier to warning signals, by reducing post-crisis recovery times and by building capacity of national actors.
- 3 Deliver coordinated and integrated life-saving assistance to people affected by emergencies.

SUMMARY PROGRESS *



* 0: means that we do not have the achievements of these indicators.