

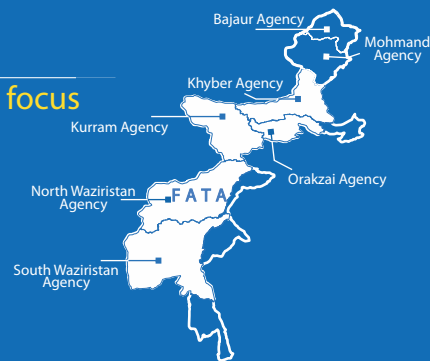


Community Restoration (CoRe) Cluster

Monthly Dashboard, April 2017

FATA - Complex Emergency 2017

Geographic focus



Thematic areas

- Business Support
- Cash for Work
- CBDRR/ Vocational Training
- Women Cash Grants
- Medium Scale Infra Rehabilitation
- Community Based Infrastructure Rehabilitation

\$ 26.23 million
Total funding requirements

People in need



People targeted



People assisted



Funding information (\$)

Required: **26.23 million**

Received: **5.1 million**

Funding gap: **21.13 million**

Donors: **UKAID, EU**

Co-Lead agency



FATA Disaster Management Authority (FDMA)

Implementing partners



Contact

Asma Ansari
Asst. Cluster Coordinator
Asma.ansari@undp.org

+92 91 584 5077 (x 218)

Web:
<https://www.humanitarianresponse.info/en/operations/pakistan/community-restoration>

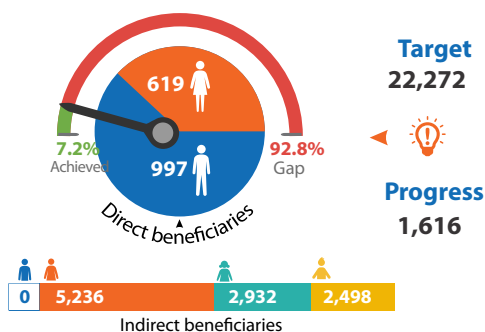
CLUSTER OVERVIEW

The CoRe Cluster seeks to improve self-sufficiency and resilience of returnees to FATA, ensuring a smooth transition to longer-term recovery and development.

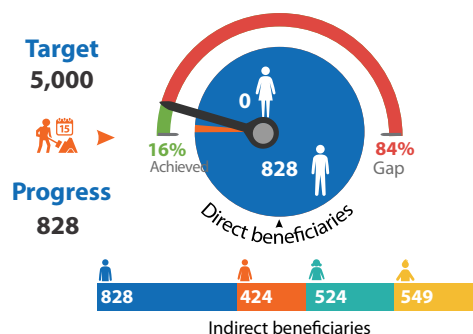
a. Livelihoods Support

Provide diversified livelihoods support to IDPs that have returned to FATA and IDPs in hosting areas.

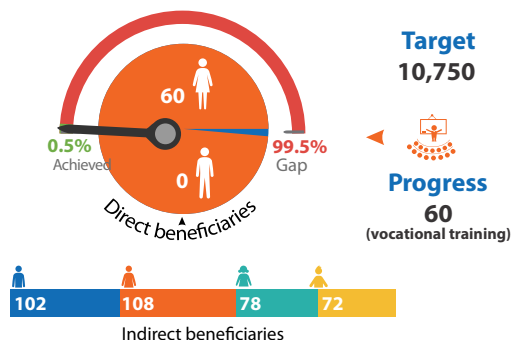
Business support



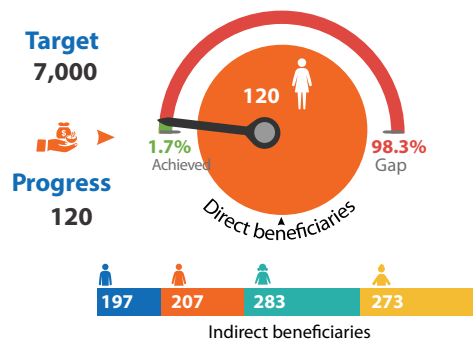
Cash for work



CBDRR/vocational training



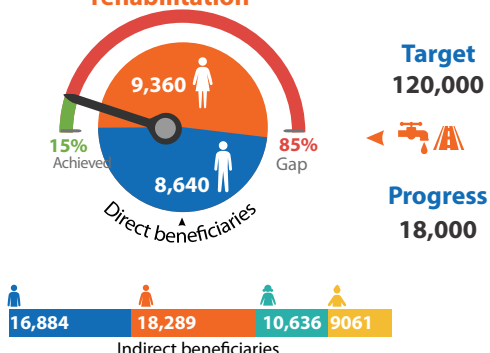
Women cash grants



b. Basic services & infrastructure

Rehabilitation of community based infrastructure to improve access to services and promote resilient recovery

Medium scale infrastructure rehabilitation



Community based infrastructure rehabilitation

